

# EXTRA 2 INOX HE



## 316L STAINLESS STEEL CALORIFIERS WITH 2 EXTRACTABLE HEAT EXCHANGERS



### APPLICATION

Production and storage of sanitary hot water.

### MATERIAL

Stainless Steel 316 L suitable drinkable water according to D. M. n. 174 dated 06.04.04.

### HEAT EXCHANGER:

2 stainless steel 316L Antilegionella® heat exchangers (upper exchanger is straight and the other is bent to the bottom).

### INSULATION.

Ecological hard polyurethane foam with high thermal insulation. For models >500 nofire polyester fibre 100% made of recyclable material, with high thermal insulation. Fire resistance class b-s2d0 according to en 13501. Pvc external lining complete with top and flange cover.

### CATHODE PROTECTION

Magnesium anode- Models > 1500 n° 2 magnesium anodes.

### DRAIN

External confluence through drain connection.

### GASKET- FLANGE PLATE

Silicone gaskets suitable for alimentary use for max temperature up to 200°C. Mild steel exchanger head with anticorrosion treatment.

### WARRANTY

- 5 years- See general sales conditions and warranty.

### ACCESSORIES AND SPARE PARTS

See Accessories section for the entire list.



SEE EXTRA SECTION FOR HEAT EXCHANGERS PRESSURE LOSS CHART AND TECHNICAL DATA



TECHNICAL DATA AND ECODESIGN ERP LABELS AVAILABLE ONLINE AT WWW.CORDIVARI.COM



Designed according to 2009/125/CE Directive (ErP – Eco-friendly Plan Specification), HE series are already compliant with Regulation n. 814/2013, that demands C-energy efficiency class from September, 26th 2017.

### EXTRA 2 XXB-XXC HE

Model	D.H.W. Storage: STAINLESS STEEL Heat Exchanger: STAINLESS STEEL	ENERGY EFFICIENCY CLASS	HEAT EXCHANGER SURFACE	
			Lower	Upper
	Art. Nr.		[m <sup>2</sup> ]	
200	3082052300222	C	0,5	0,5
300	3082052300223	C	0,75	0,75
500	3082052300224	C	1,5	1,5
800	3082052300225	C	2	2
1000	3082052300226	C	3	2
1300	3082052300227	C	3	3
1500	3082052300228	C	3	3
2000	3082052300229	C	4	4

# EXTRA 2 INOX XXC

3 exchangers version also available on request.



### EXTRA 2 XXC

Model	D.H.W. Storage: STAINLESS STEEL Heat Exchanger: STAINLESS STEEL	ENERGY EFFICIENCY CLASS	HEAT EXCHANGER SURFACE	
			Lower	Upper
	Art. Nr.		[m <sup>2</sup> ]	
1500	3082052300208	F	3	3
2000	3082052300209	F	4	4
2500	3082052300210		5	5
3000	3082052300212		6	6
4000	3082052300214		8	8
5000	3082052300216		10	10

### EXTRA 2 COMPACT XXC

Model	D.H.W. Storage: STAINLESS STEEL Heat Exchanger: STAINLESS STEEL	ENERGY EFFICIENCY CLASS	HEAT EXCHANGER SURFACE	
			Lower	Upper
	Art. Nr.		[m <sup>2</sup> ]	
2500	3082052300211		5	5
3000	3082052300213		6	6
4000	3082052300215		8	8

— Accessories on request —

#### “Easy Control” Electronic Display

See accessories section



#### Monophase and Threephase electric resistances

See accessories section

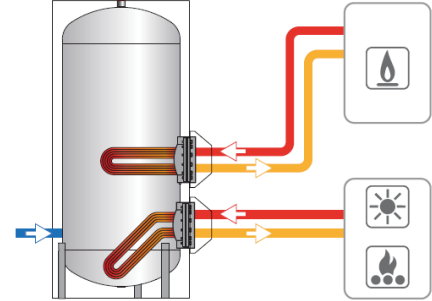
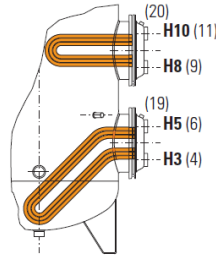
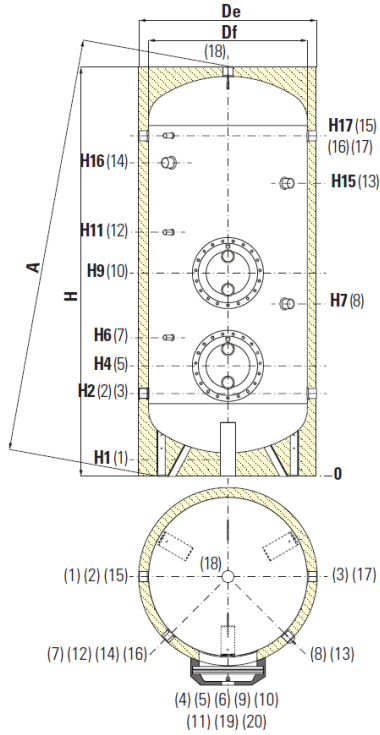


# EXTRA 2 INOX HE

## 316L STAINLESS STEEL CALORIFIERS WITH 2 EXTRACTABLE HEAT EXCHANGERS

STORAGE		HEAT EXCHANGERS	
Pmax	Tmax	Pmax	Tmax
6 bar	95 °C	12 bar	110 °C

**CORDIVARI Lab**  
 TÜV Rheinland  
 Energie und Umwelt  
 gmbh states that test  
 procedures and Cordivari LAB are  
 certified conforming to European  
 standard EN 15332, as indicated  
 by Ecodesign ErP Directive.



1	Drain 3/4" Gas F for capacities from 200 to 1000 lt; 1" Gas F for models > 1000	10	Upper heat exchanger flange
2	Domestic cold water circuit inlet	11	Fixed upper heat exchanger inlet
3	Alternative domestic cold water circuit inlet or connection for more boilers	13	Connection for 2nd anode 1"1/4 Gas F (only for models > 1500)
4	Lower heat exchanger outlet	14	Connection for electrical immersion 1"1/2 Gas F for models > 800 ^lconnection 2" Gas F
5	Heat exchanger flange	15-17	Connection for recirculation or for domestic hot water
6	Lower heat exchanger inlet	16	Connection for instrumentation 1/2" Gas F
7-12	Connection for instrumentation 1/2" Gas F	18	Domestic hot water outlet
8	Connection for magnesium anode 1"1/4 Gas F	19-20	Air spurge heat exchanger 3/8" Gas F
9	Lower heat exchanger outlet		

Model	Net Volume [litres]	Df	De	De (HE SERIE)	H	A	H1	H2	H3	H4	H5	H6	H7	H8	H9
[mm]															
200	190	450	//	550	1451	1552	81	316	351	401	451	511	701	801	851
300	293	550	//	650	1569	1698	149	409	444	494	544	604	794	894	944
500	503	650	//	750	1861	2006	141	426	461	511	561	621	811	911	961
800	795	790	//	990	1943	2008	113	428	473	563	653	713	863	1003	1093
1000	911	800	//	1000	2212	2270	112	437	482	572	662	722	922	1032	1122
1300	1272	950	//	1150	2193	2275	118	433	578	668	758	818	918	1078	1168
1500	1401	1000	1100	1200	2177	2266	112	447	592	682	772	832	982	1142	1232
2000	1980	1250	1350	1450	2099	2231	134	529	649	754	859	929	1004	1229	1334
2500	2320	1250	1350	//	2299	2396	134	529	649	754	859	929	954	1249	1354
3000	2925	1250	1350	//	2799	2879	134	529	709	814	919	989	1014	1349	1454
4000	3776	1400	1500	//	2872	2968	117	557	737	842	947	1017	1022	1377	1482
5000	4995	1600	1700	//	2909	3031	94	564	734	839	944	1014	1019	1384	1489

COMPACT	Model	H10	H11	H15	H16	H17	5 10	1	2 3 15 17	4 6 9 11	7 12 16	8	13	14	19 20	18
	[mm]															
2500	2635	1400	1500	//	2122	2251	117	557	677	782	887	957	982	1257	1362	
3000	3030	1500	1600	//	2131	2276	106	556	736	841	946	1016	981	1256	1361	
4000	4002	1600	1700	//	2409	2555	94	564	744	849	954	1024	1029	1331	1436	

Model	H10	H11	H15	H16	H17	5 10	1	2 3 15 17	4 6 9 11	7 12 16	8	13	14	19 20	18
[mm]															
200	901	961	//	1066	1176	∅e 300	3/4"	1"1/4	1"	1/2"	1"1/4	//	1"1/2	3/8"	1"1/4
300	994	1054	//	1159	1269	∅e 300	3/4"	1"1/4	1"	1/2"	1"1/4	//	1"1/2	3/8"	1"1/4
500	1011	1071	//	1380	1536	∅e 300	3/4"	1"1/4	1"	1/2"	1"1/4	//	1"1/2	3/8"	1"1/4
800	1183	1243	//	1382	1538	∅e 380	3/4"	1"1/4	2"	1/2"	1"1/4	//	1"1/2	3/8"	1"1/2
1000	1212	1272	//	1642	1797	∅e 380	3/4"	1"1/2	2"	1/2"	1"1/4	//	2"	3/8"	1"1/2
1300	1258	1318	//	1638	1793	∅e 380	1"	1"1/2	2"	1/2"	1"1/4	//	2"	3/8"	2"
1500	1322	1382	//	1602	1757	∅e 380	1"	1"1/2	2"	1/2"	1"1/4	1"1/4	2"	3/8"	2"
2000	1439	1404	1524	1473	1629	∅e 430	1"	2"	2"	1/2"	1"1/4	1"1/4	2"	3/8"	2"
2500	1459	1529	1794	1710	1879	∅e 430	1"	2"	2"	1/2"	1"1/4	1"1/4	2"	3/8"	2"
3000	1559	1629	2294	2210	2369	∅e 430	1"	2"	2"	1/2"	1"1/4	1"1/4	2"	3/8"	2"
4000	1587	1657	2302	2225	2397	∅e 430	1"	2"	2"	1/2"	1"1/4	1"1/4	2"	3/8"	2"
5000	1594	1664	2319	2159	2404	∅e 430	1"	2"	2"	1/2"	1"1/4	1"1/4	2"	3/8"	2"

COMPACT	Model	H10	H11	H15	H16	H17	∅e	1"	2"	2"	1/2"	1"1/4	1"1/4	2"	3/8"	2"
	2500	1537	1432	1552	1501	1657	∅e 430	1"	2"	2"	1/2"	1"1/4	1"1/4	2"	3/8"	2"
	3000	1466	1431	1551	1500	1656	∅e 430	1"	2"	2"	1/2"	1"1/4	1"1/4	2"	3/8"	2"
4000	1716	1611	1809	1732	1904	∅e 430	1"	2"	2"	1/2"	1"1/4	1"1/4	2"	3/8"	2"	